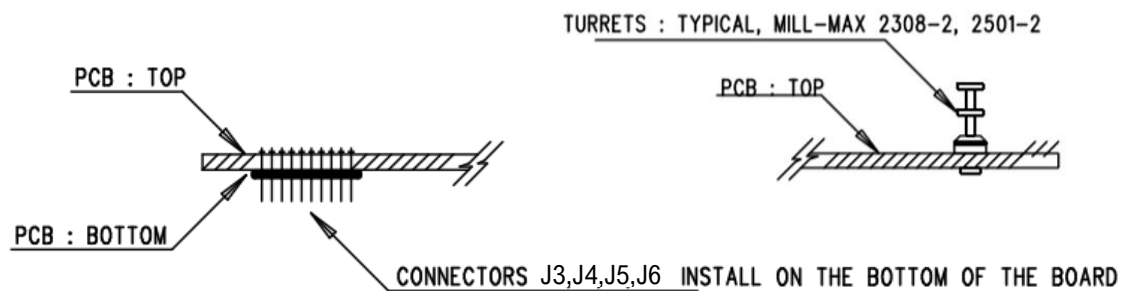
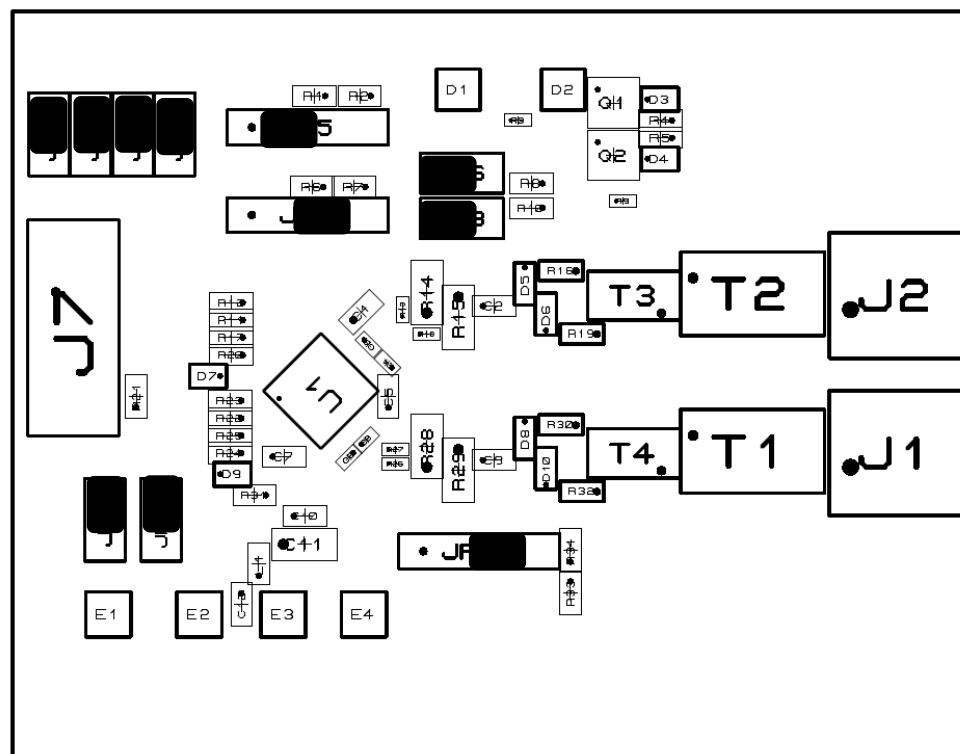


INSTALL SHUNTS IN  
POSITIONS SHOWN



**ANALOG  
DEVICES**  
AHEAD OF WHAT'S POSSIBLE™

Top Assembly Drawing  
Dual isoSPI Adapter  
EVAL-ADBMS6822

EVAL-ADBMS6822\_REVB\_PCA\_ASSY\_DWG